

# Warm Up

by nicola orioli



## esercizio n.1 / exercise n.1

### suoni armonici / sons harmoniques

Un esercizio per trovare un'intonazione interiore".

Un exercice pour trouver une "justesse interieure".

Sempre calmo e tranquillo.

Toujour calme et tranquille.

.10 SAXOPHONE

The image shows a musical score for saxophone exercise n.1. It consists of two staves of music in 2/4 time, starting with a key signature of one flat (Bb). The first staff begins with a treble clef and a key signature change to one flat. The second staff begins with a bass clef and a key signature change to one flat. The music is written in a simple, rhythmic style. Below the notes, there are diagrams of saxophone fingerings and harmonics. The first staff has six diagrams, and the second staff has six diagrams. The diagrams show the placement of fingers on the keys and the resulting harmonics, labeled with notes like C, Bb, B, and C#.

## esercizio n.2 / exercise n.2

### lingua / langue

con metronomo tra 80 e 108

avec metronome entre 80 et 108

sempre legato-staccato “da-da”

toujour liée-détaché “da-da”

la nota di partenza e' **G**

la note du depart est **G**

le note successive si allontanano di mezzo tono nei due sensi verso l'acuto e verso il grave.

les notes suivantes s' éloignent par demi-ton dans le deux sens vers l'aigu et vers le grave

la sequenza e' : **G G# F# A F Bb E B Eb C D C#**

la sequence est : **G G# F# A F Bb E B Eb C D C#**



etc.....

esercizio n.3 / exercise n.3

mano sinistra / main gauche

rapido

vite



esercizio n.4 / exercise n.4

mano destra / main droite

rapido

vite



## esercizio n.5 / exercise n.5

### dita / doigts

un esercizio per le dita.

Un exercise pour les doigts.

Trasportare seguendo la serie (dodecafonica) dell'esercizio n.2 G G# F# A F Bb E  
B Eb C D C#

Transposer en suivant la serie (dodecaphonique) de l'exercice n. 2 G G# F# A F Bb E B  
Eb C D C#

Metronomo da 120 a 150

Metronome de 120 a 150



## esercizio n.6 / exercise n.6

### ottave / octaves

lento

lent

Musical notation for exercise n.6. It consists of three staves in treble clef with a common time signature. The first two staves contain octaves of eighth notes, with the second staff starting at measure 6. The notes are: G4, G#4, F#4, A4, F4, Bb4, E4, B4, Eb4, C4, D4, C#4. The third staff shows a long slur over the notes G4, G#4, F#4, A4, F4, Bb4, E4, B4, Eb4, C4, D4, C#4, ending at measure 12.

**esercizio n.7 / exercise n.7**

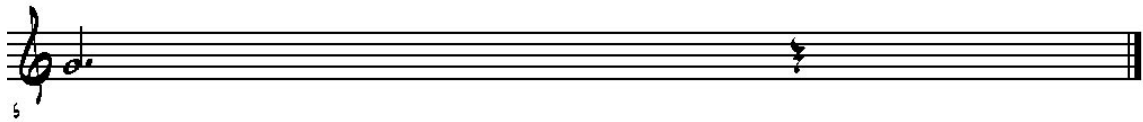
**staccato / détaché**

sempre **da-da**

toujour **da-da**

seguire la serie **G G# F# A F Bb E B Eb C D C#**

suivre la serie **G G# F# A F Bb E B Eb C D C#**



**esercizio n.8 / exercise n.8**

**cromatico / chromatique**

rapido

vite

seguire la serie **G G# F# A F Bb E B Eb C D C#**

suivre la serie **G G# F# A F Bb E B Eb C D C#**

